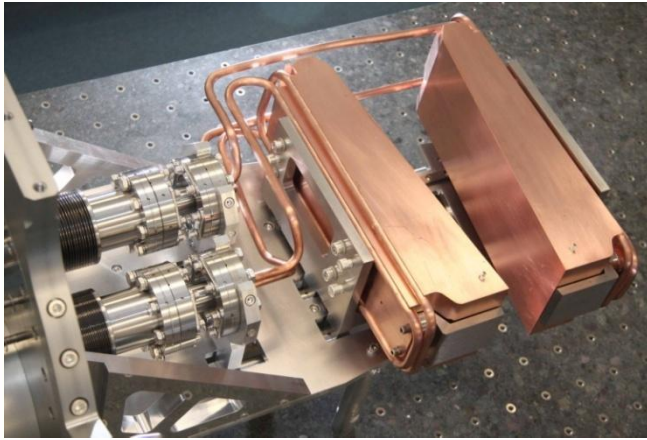


Features

- Horizontal slits capable of absorbing >10kW per blade, vertical slits > 7kW per blade.
- Precision actuator resolution can be controlled to 0.1µm with 5µm repeatability open loop, sub-micron when fitted with encoder.
- Blade K type thermocouples provided.
- Range of motion: horizontal & vertical ±10mm.
- Position resolution <1.0µm.
- Position repeatability <1.0µm.
- Bakeable slit system to 120 °C.

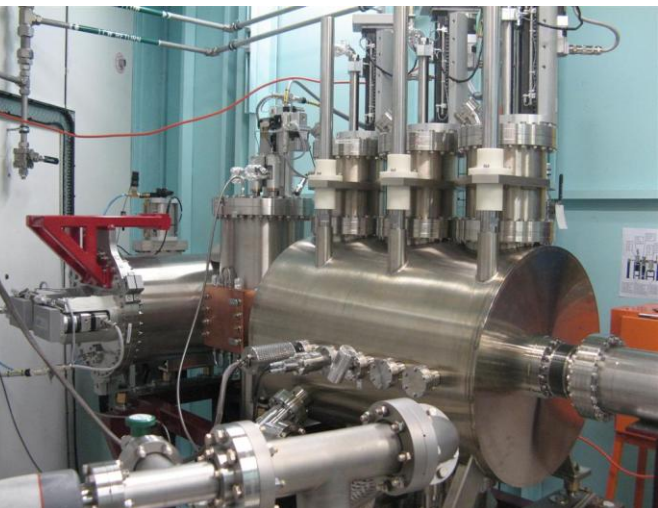
High Heat Load Slits & Filters



Above: Horizontal slits installed on the Imaging & Medical beamline at the Australian Synchrotron.

Beam-defining tungsten edge is precision lapped so that the edge protrudes 0.1mm above top edge of slit blade.

Tungsten edge is thermally decoupled from slit block (shown below).



Above: Australian Synchrotron Imaging & Medical beamline - horizontal & vertical slits, & 5-axis multi-filter system.

5-axis multi filter system capable of absorbing >6kW with 500µm annealed TPG foil.

Unique water cooled design prevents coolant boiling for such high-heat load absorption.

Left: Vertical slits installed on the Imaging & Medical beamline at the Australian Synchrotron.